

LOCATION

Caldecotte Lake,
Milton Keynes

CLIENT

Action4 Youth

PROJECT NUMBER

PB22003

DOCUMENT NUMBER

O1



DRAFT



ACTION 4 YOUTH

ACTION4YOUTH

Contents

1.0	DESIGN CONCEPT
1.1	Contextual inspiration (Caldecotte)
1.2	Forming a design language (precedents)
1.3	Branding and Graphics
1.4	Initial Mood Board
2.0	ENTRANCE HALL
2.1	Mood Board
2.2	Layout plan
2.3	Internal Elevations
2.4	Entrance Hall Sketch 01
2.5	Entrance Hall Sketch 02
3.0	DINING HALL
3.1	Mood Board
3.2	Layout Plan
3.3	Dining Hall Sketch 01
4.0	SERVICE DESK
4.1	Concept Sketch
5.0	LIGHTING
5.1	Mood Board
5.2	Reflected Ceiling Plan Sketch



01

DESIGN CONCEPT

Context inspiration

The site is located in Caldecotte, in close proximity to Caldecotte Lake which is part of the Parks Trust and is one of Milton Keynes most spectacular lakes. The adjacent landscape surrounding the site attracts various types of users including; dog walkers, cycleists and people who are interested in watersports and various other outdoor activities.

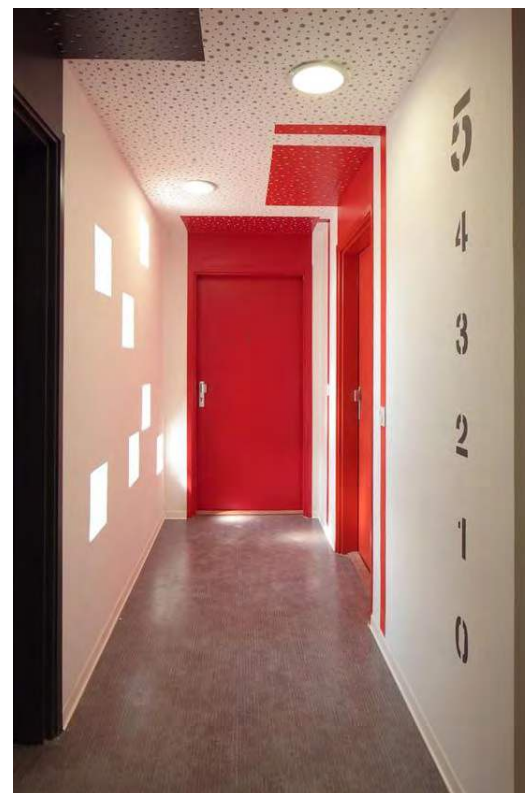
The proposed building will be known as 'Action4Youth Xperience Site', situated west of the lake along Simpson Drive. The centre will be an activity hub for the Action4Youth charity, a local charity that focuses on providing a transformative, collaborative and an empowering environments for young people. The proposal will improve the useability of the building and help rebrand the existing centre.

The design proposal evokes an air of youthfulness and modern simplicity, inspired by the charities rebranded identity. This is reflected in the architecture, interior design and branding of the scheme.



A selection of images of Caldecotte, Milton Keynes

Forming a design language...



Branding & Graphics

The adjacent images have been given to us by the client, identifying some of the initial colours that the charity has considered through their rebranding.



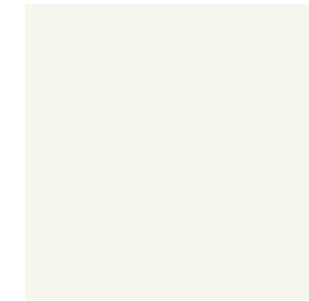
RAL 3028



RAL 7016



RAL 7021



Dulux Absolute White



**ACTION
4 YOUTH**



RAL 6029



RAL 1018



RAL5012



RAL1033

The adjacent images shows an initial moodboard including materials textures and colours bringng together branding colours from the chairty, along with intial material choices inline with the design language. We have decided to go for a limited pallet as introducing too many colours could become quiet overwhelming. However the colour pallet looked at in the previous page has been integrated in orther ways i.e. having the green implimented through planting, the blue being integrated through tiling that could potentially line wetrooms such as the changing room and shower rooms.



Initial Material Moodboard From Design Precedents

[Blank Page]



02

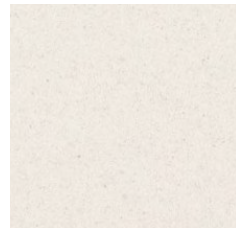
ENTRANCE HALL

Entrance Hall Mood Board

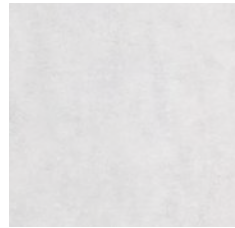


Layout plan

FLOOR FINISHES



Light Grey floor Vinyl



Light Grey floor Vinyl



Red floor Vinyl graphic

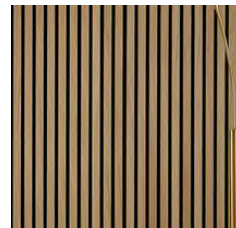
WALL FINISHES



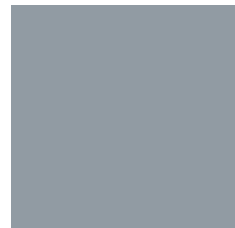
40% Dennison's Vinyl Film 60% Dulux Absolute White Pint



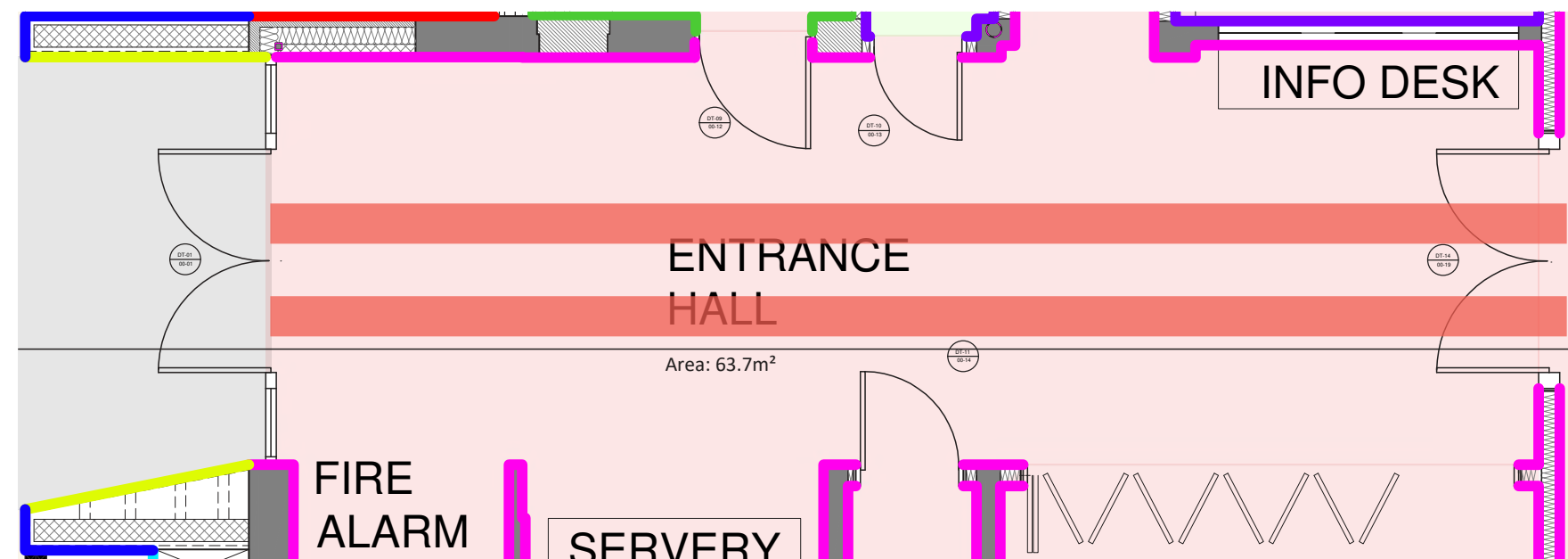
External Grade Rockpanel Ply RAL 3028



Dark timber roof cladding



Light Grey painted doors



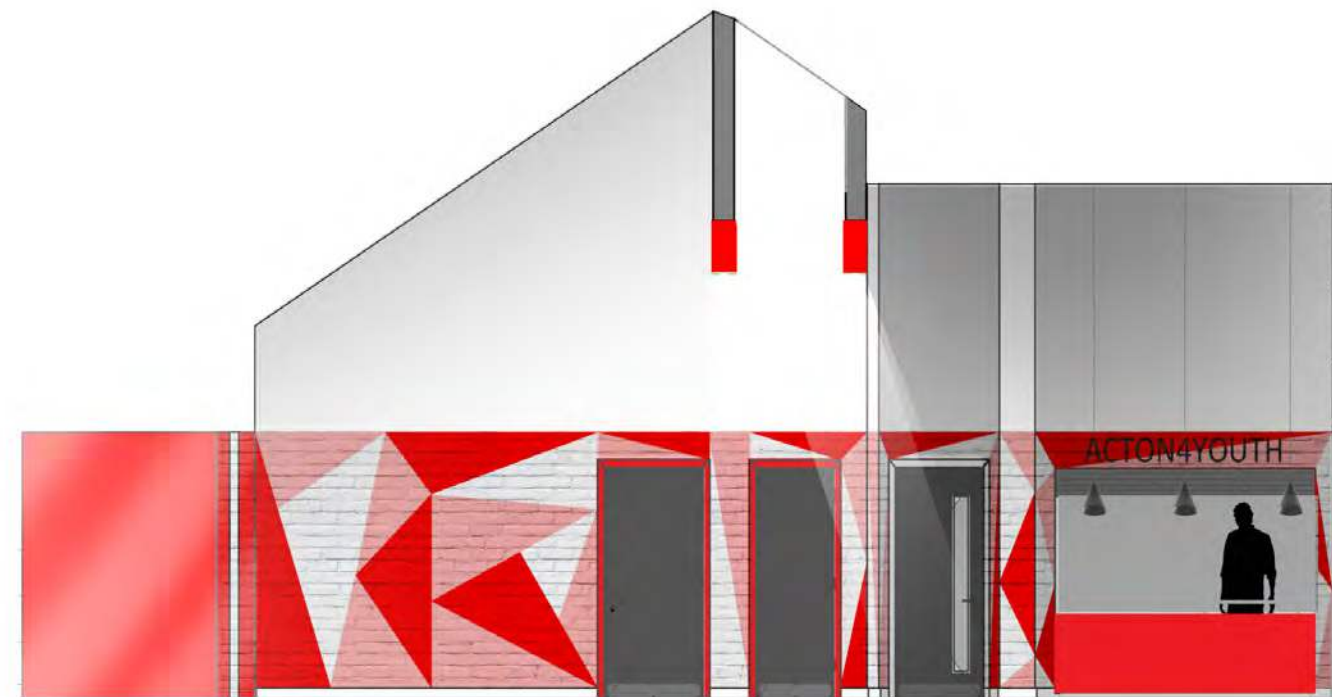
Sketch Plan of Entrance Foyer

Elevations

The adjacent images shows internal elevations of the entrance hall for the Action4Youth proposal. Looking at some initial graphic vinyl application on walls to reflect the charities branding and create a sense of youthfulness for the interior of the youth club.



Entrance Hall Elevation A



Entrance Hall Elevation B

Entrance Hall Sketch 01



Entrance Foyer Sketch 02





03

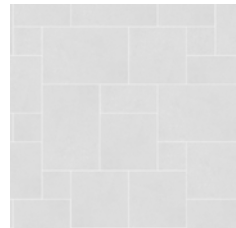
DINING HALL

Entrance Foyer Mood Board

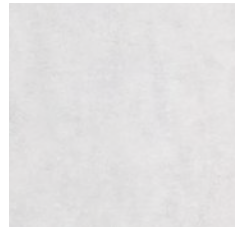


Layout plan

FLOOR FINISHES



Grey Paving to Match Existing



Light Grey floor Vinyl

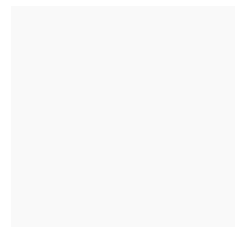


Red floor Vinyl graphic

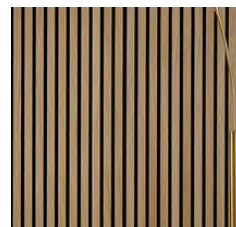
WALL FINISHES



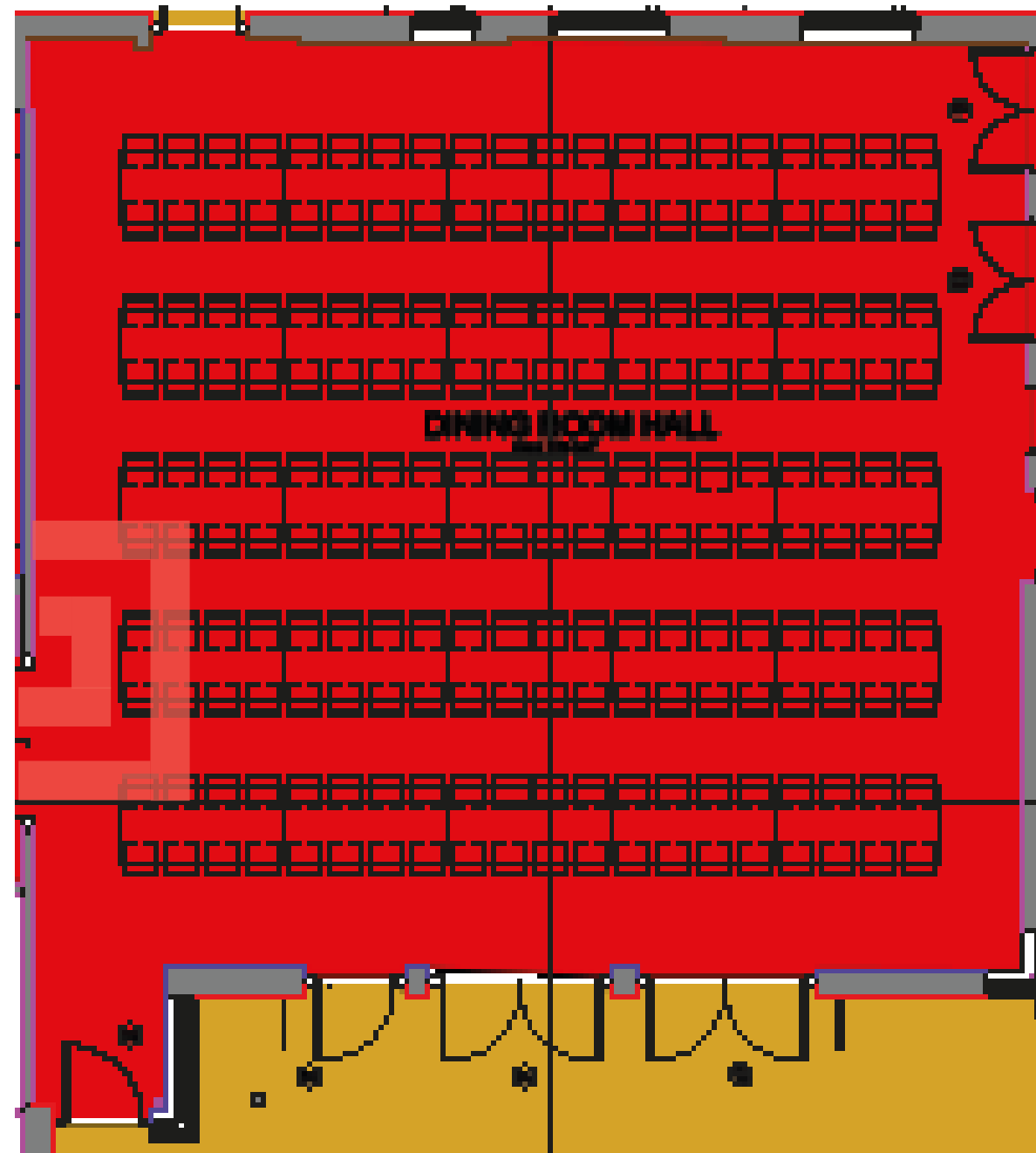
100% Dennison's Vinyl Film



Dulux Absolute White Paint finish



Dark timber roof cladding



Sketch Plan of Dining Hall

Dining Hall Sketch



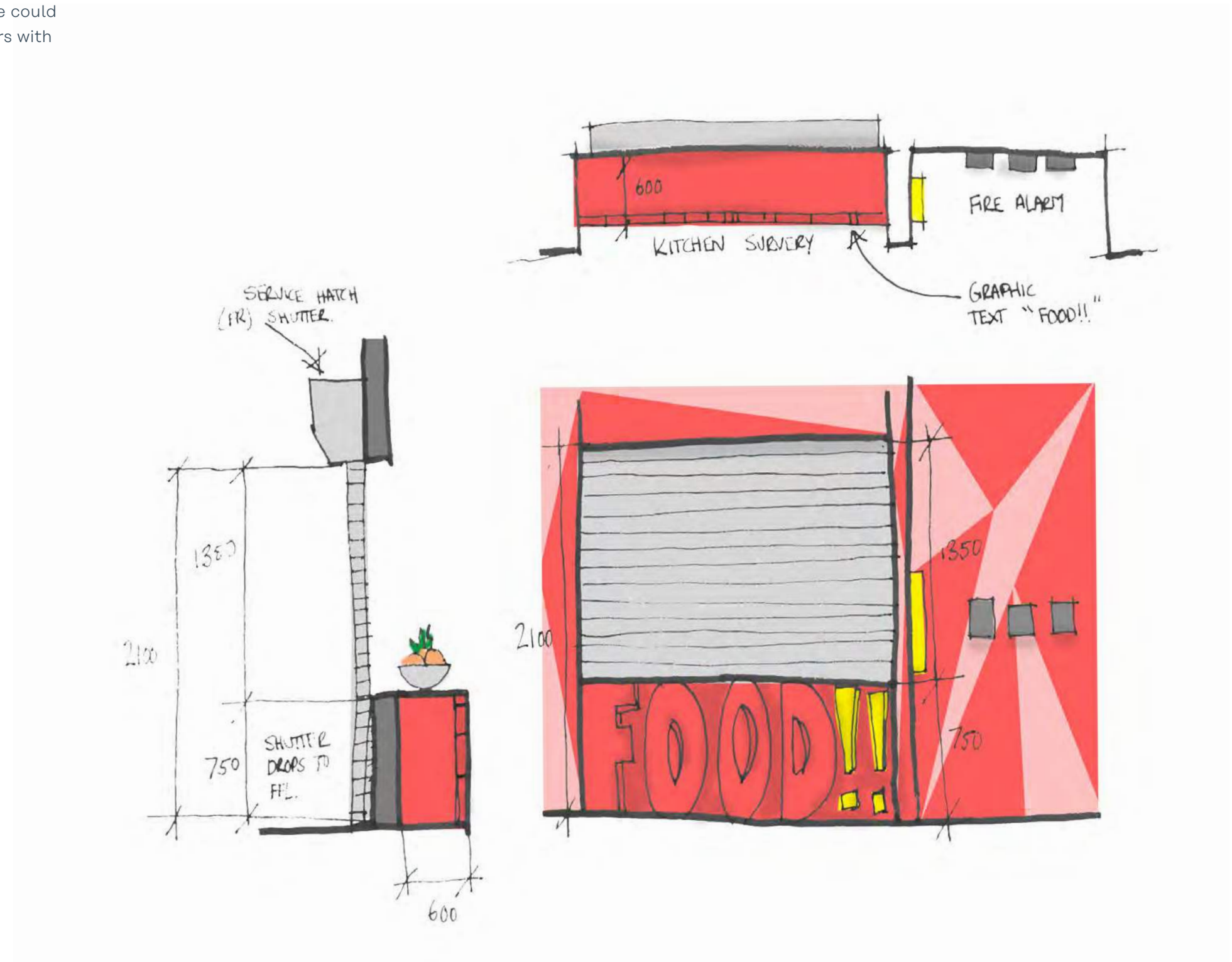


04

SERVICE DESK CONCEPT

Kitchen Service Desk Sketch

The adjacent image starts to explore how the service table could potentially be designed to accommodate for disabled users with a lowered

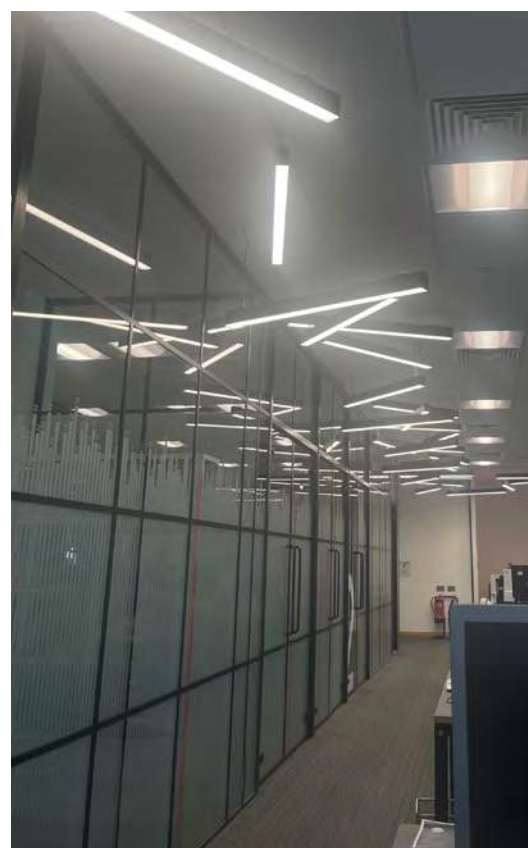
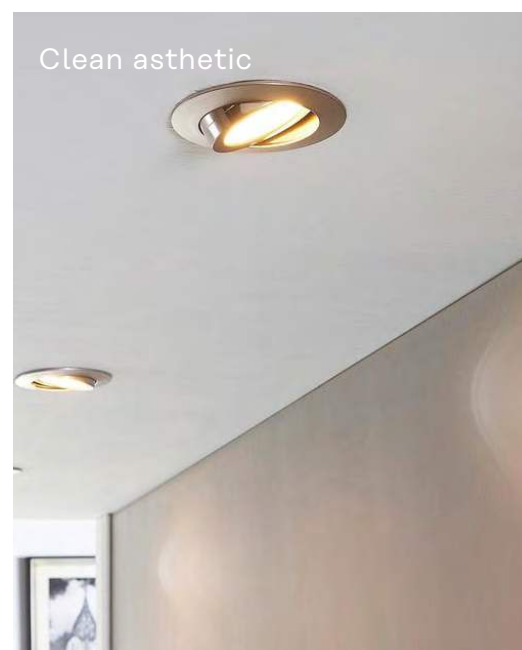
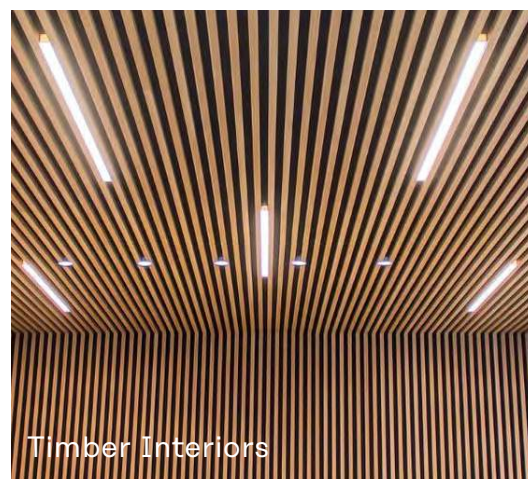




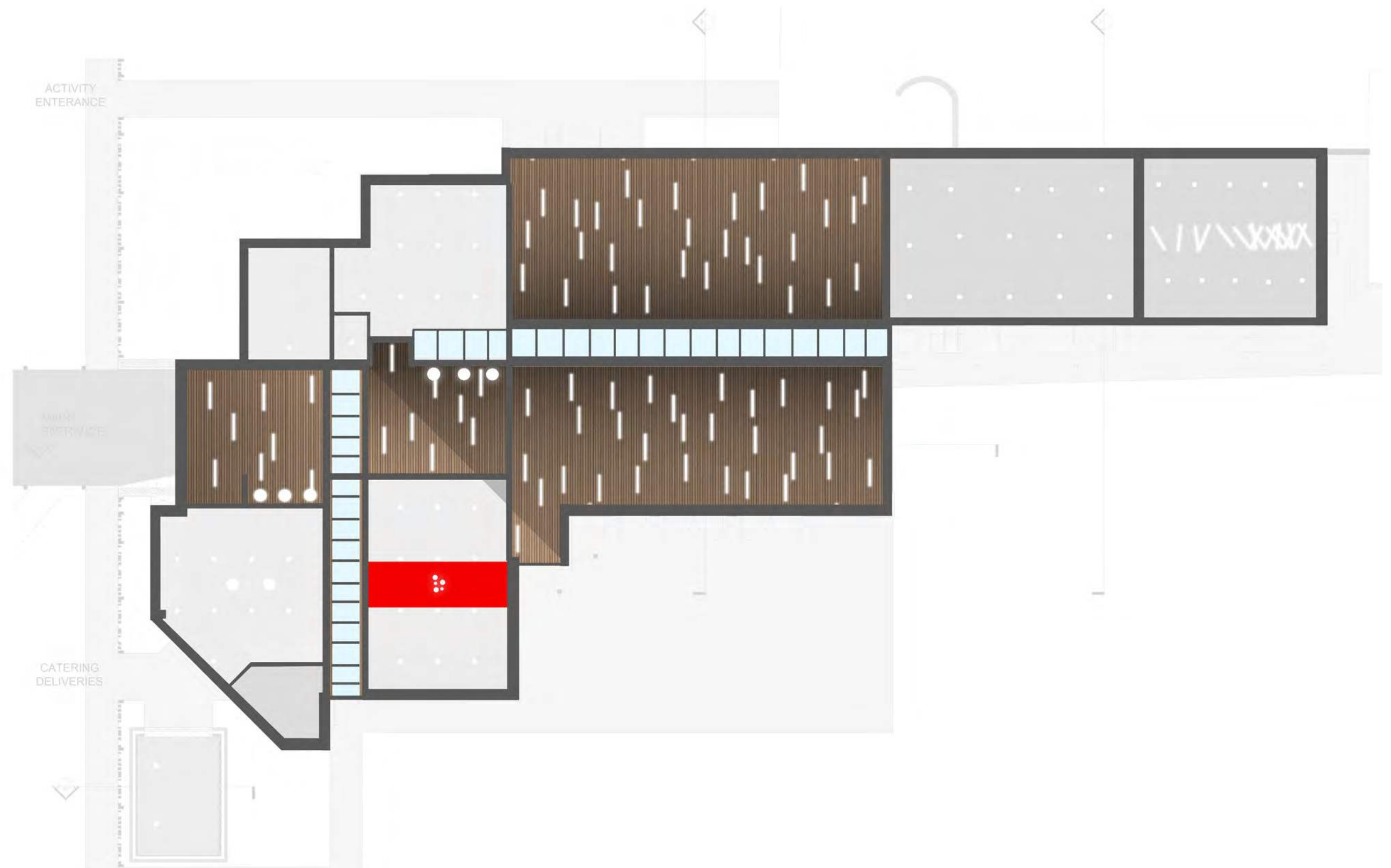
05

REFLECTIVE CEILING PLAN CONCEPT

Interior Lighting Mood Board



Reflective Ceiling Plan Sketch



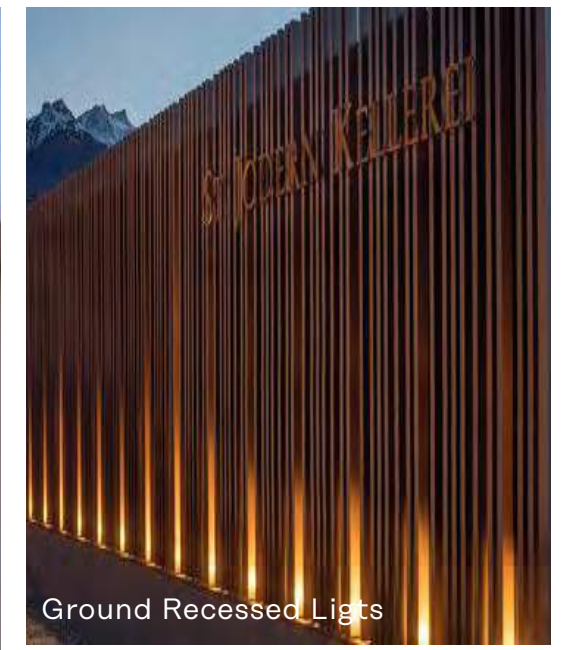
[Blank Page]



05

EXTERNAL LIGHTING CONCEPT

Exterior Lighting Mood Board



BENCHMARK
ARCHITECTS

Benchmark Architects Ltd

mk | Victoria House, 199 Avebury Boulevard, Milton Keynes, MK9 1AU
london | The Gridiron Building, 1 Pancras Square, London, N1C 4AG
bedford | 90 Dunstable Street, Ampthill, Bedfordshire, MK45 2JR

01908 732200 Team@benchmarkarchitects.com

www.benchmarkarchitects.com